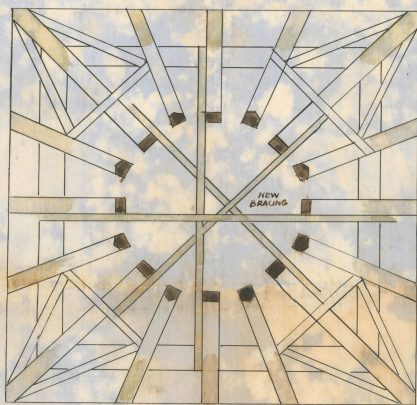


ST PETERS CHURCH No 19

THUNDERSLEY ESSEX

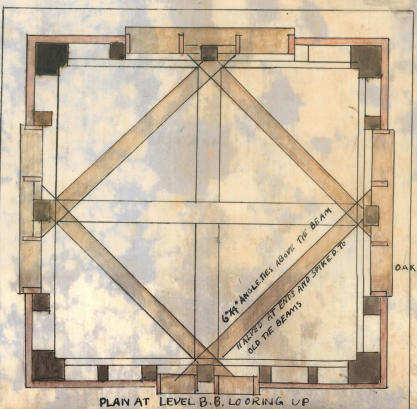
Proposed Repairs to the Steeple Half Inch Scale

Nicholson & Corbitt Architects.
2 New Square
Lincoln's Inn W.C.



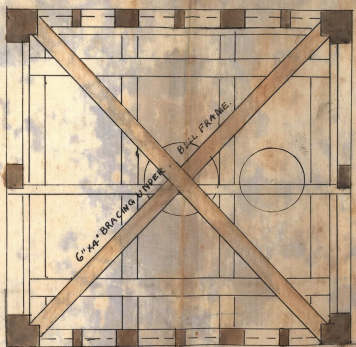
PLAN OF SPIRE TIMBERS

4" WIDE SPIROCKETS
TO ALL RAFTERS & PROJECTION
BEYOND WALL PLATES

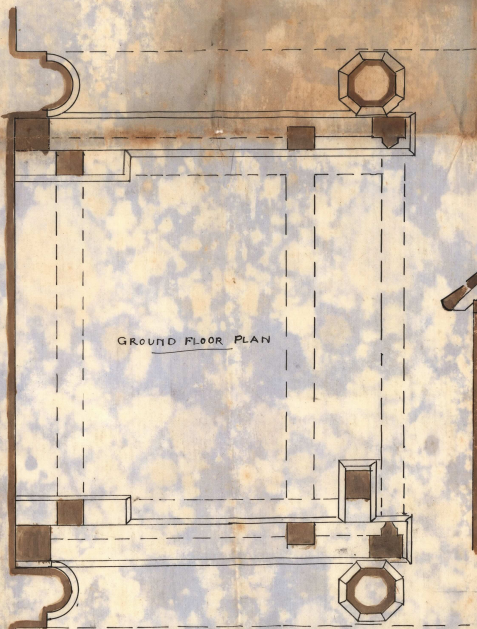


PLAN AT LEVEL B.B. LOOKING UP

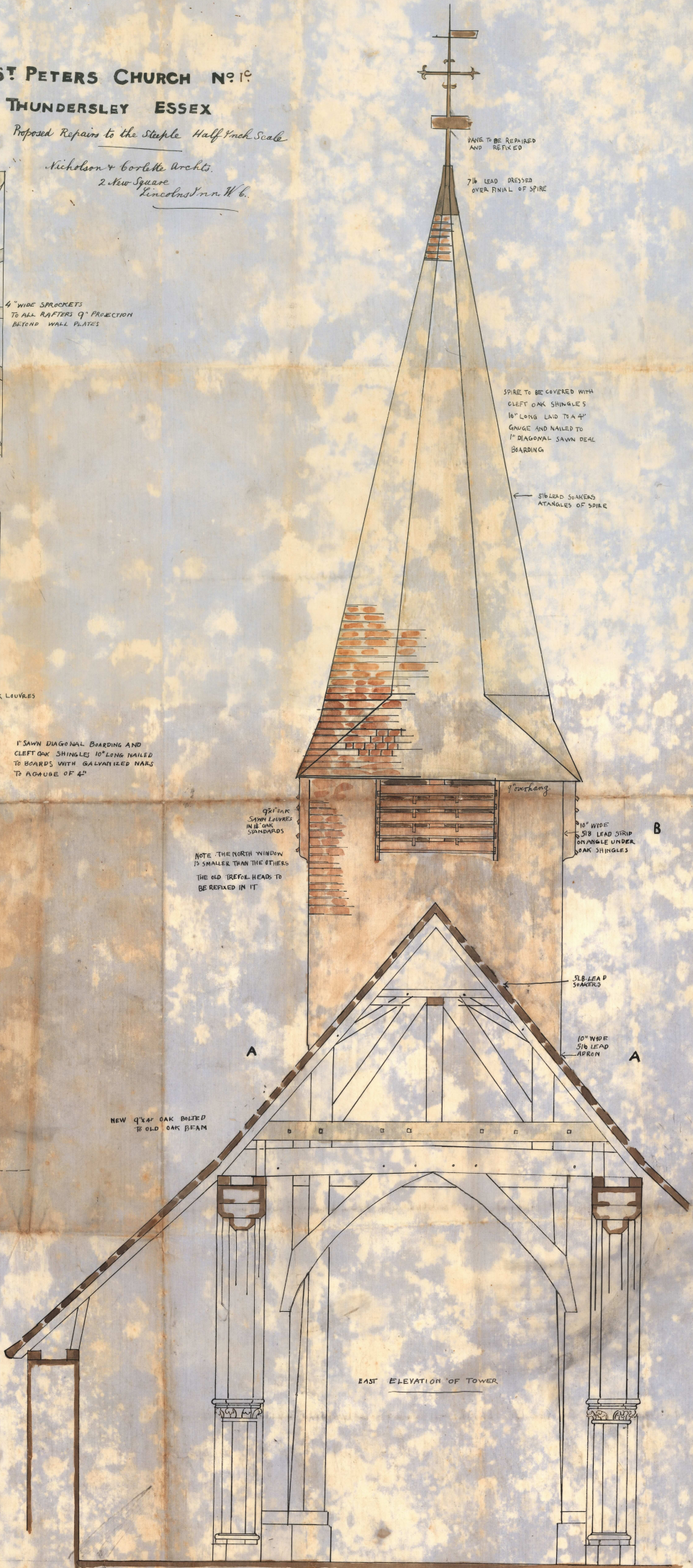
1" SAWN DIAGONAL BRACING AND
CLEFT OAK SHINGLES 10" LONG NAILED
TO BOARDS WITH GALVANIZED NAILS
TO A GAUGE OF 4"



PLAN AT LEVEL A.A. LOOKING UP



GROUND FLOOR PLAN



PANE TO BE REPAIRED
AND REFIXED

7 1/2" LEAD DRESSED
OVER FINIAL OF SPIRE

SPIRE TO BE COVERED WITH
CLEFT OAK SHINGLES
16" LONG Laid TO A 4"
GAUGE AND NAILED TO
1" DIAGONAL SAWN DEAL
BOARDING

5/8" LEAD SHAKERS
AT ANGLE OF SPIRE

NOTE THE NORTH WINDOW
IS SMALLER THAN THE OTHERS
THE OLD DREFOL HEADS TO
BE REFIXED IN IT

9/8" OAK
SAWN LOUVRES
IN 16 OAK
SHAKERS

9/8" WIDE
5/8" LEAD STRIP
ON ANGLE UNDER
OAK SHINGLES

5/8" LEAD
SHAKERS

10" WIDE
5/8" LEAD
GROUN

NEW 9/4" OAK BRIDLED
TO OLD OAK BEAM

EAST ELEVATION OF TOWER