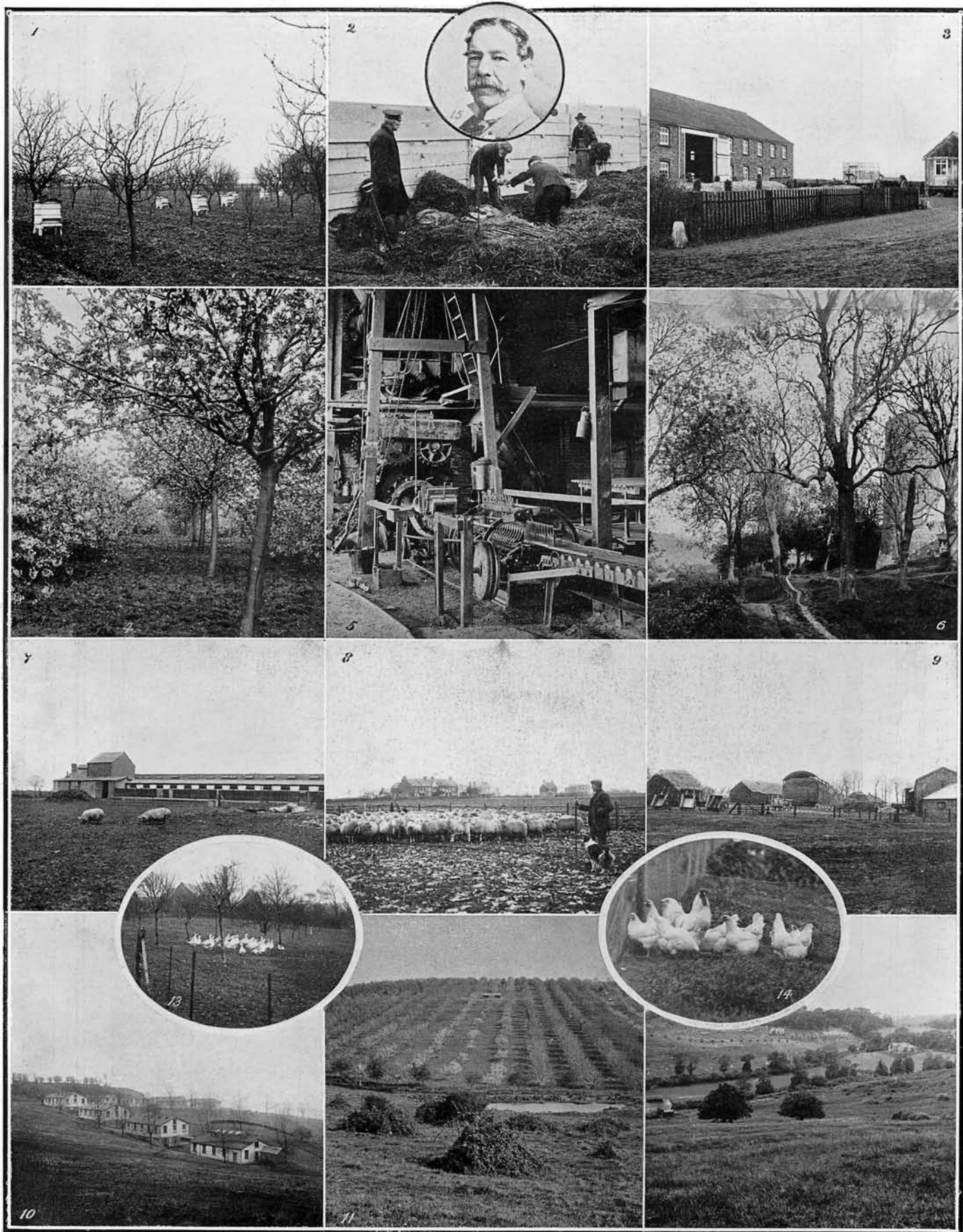


GENERAL BOOTH'S FARM COLONY SCHEME AT HADLEIGH, IN ESSEX, AND ITS BENEFACTOR, MR. GEORGE HERRING.



1. BEEHIVES IN THE ORCHARD AT HADLEIGH. 2. CUTTING AND PACKING SEA-KALE FOR THE MARKET. 3. THE VEGETABLE STACKYARD AND THE BEETROOT GRANARY. 4. THE APPLE ORCHARD IN BLOSSOM. 5. THE GREAT BRICK-MAKING MACHINE. 6. IN THE COLONY GROUNDS: HADLEIGH CASTLE ON THE RIGHT. 7. THE MODERN PIGERIES, WITH PRIZE PIGS. 8. SHEPHERD WITH THIS YEAR'S LAMBS. 9. THIS YEAR'S HAY CROP IN THE YARD. 10. THE DORMITORIES FOR COLONISTS. 11. THE APPLE ORCHARD FROM CASTLE HILL. 12. A GENERAL VIEW OF THE POULTRY-FARM. 13. A FLOCK OF GESE NEAR BRIGADIER LUFF'S HOUSE. 14. A GROUP OF PRIZE FOWLS. 15. MR. GEORGE HERRING, GIVER OF £100,000 TO THE SCHEME. (REPRODUCED FROM THE "HOSPITAL.")

Photographs by Topical Press.

GENERAL BOOTH'S FARM COLONY
SCHEME AT HADLEIGH, IN ESSEX,
AND ITS BENEFACTOR,
MR. GEORGE HERRING.

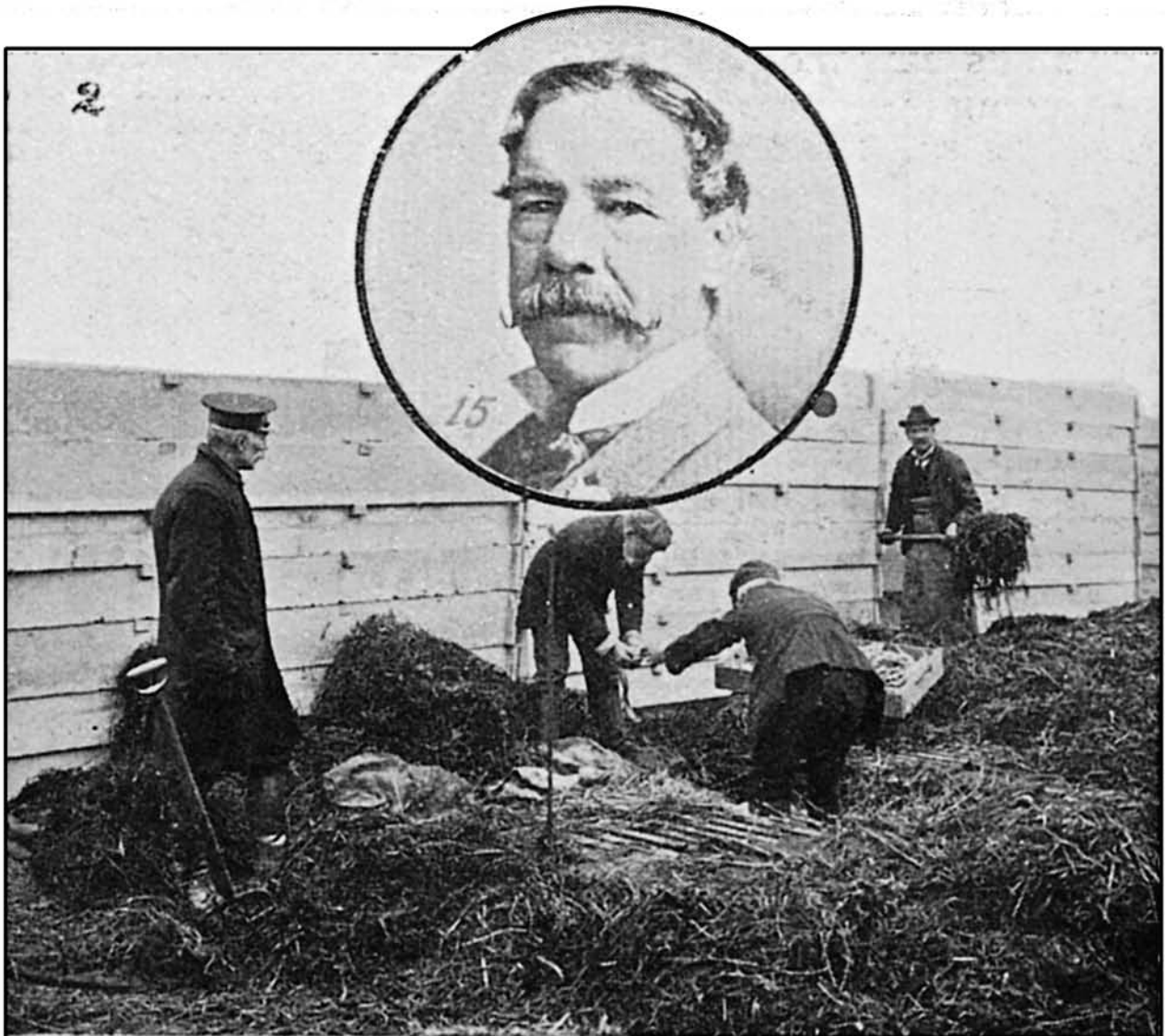
I. BEEHIVES IN THE ORCHARD AT HADLEIGH.



This is a young apple orchard in early Spring. The beehives probably OUGHT to be facing either South or East, but my suspicion is that they are facing North and we are looking at an (unidentified) outbuilding of Park Farm on the right, and the Estuary in the distance. Your thoughts?

GENERAL BOOTH'S FARM COLONY
SCHEME AT HADLEIGH, IN ESSEX,
AND ITS BENEFACTOR,
MR. GEORGE HERRING.

2. CUTTING AND PACKING SEA-KALE FOR THE MARKET.

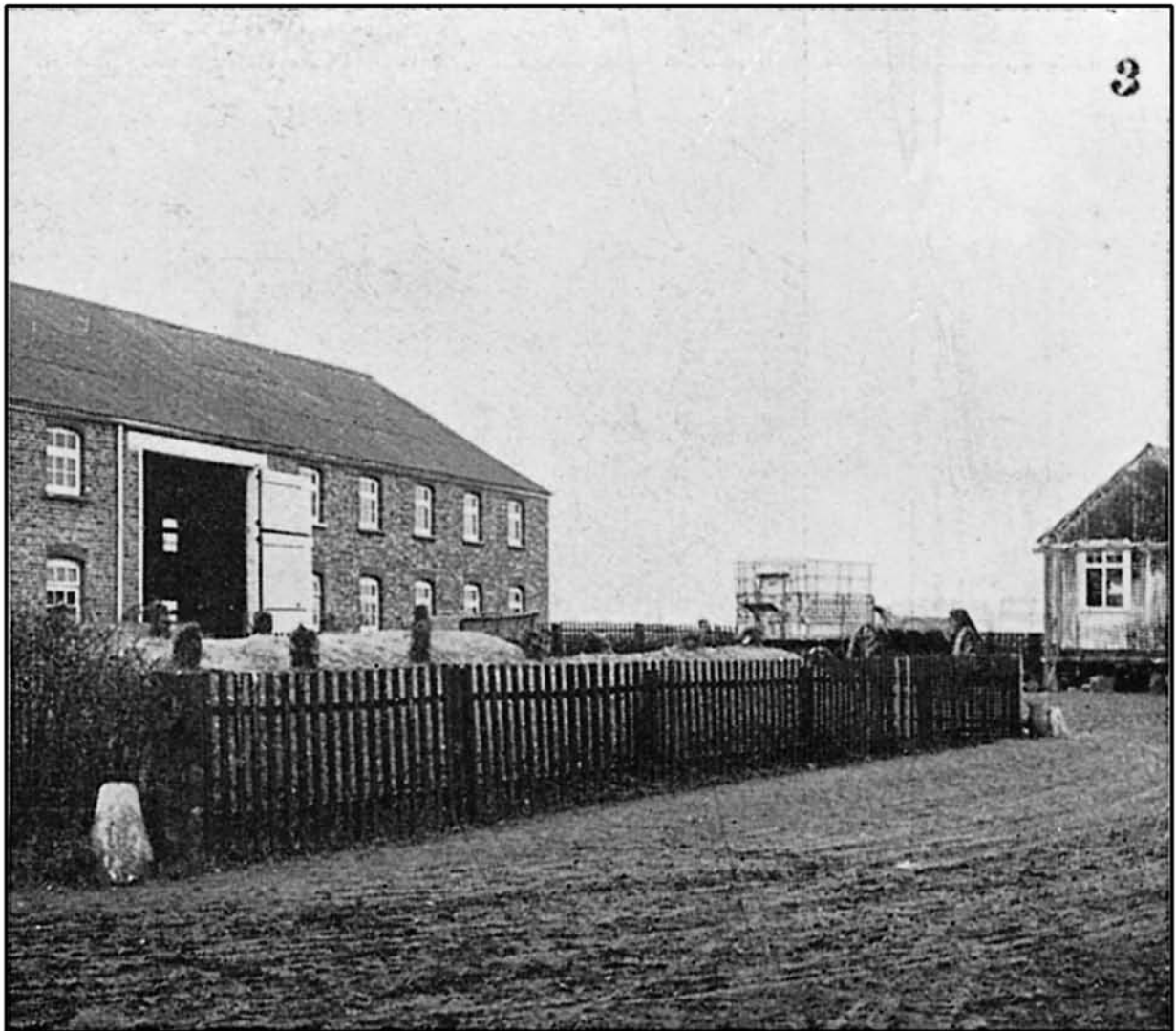


15. MR. GEORGE HERRING, GIVER OF £100,000 TO THE
SCHEME. (REPRODUCED FROM THE "HOSPITAL.")

Philanthropist George Herring died eleven months after this magazine was printed, on 2 November 1906. It is unclear to me whether he did contribute £100,000 to the Hadleigh scheme. Certainly £40,000 was received under a codicil to his will, and this was used to prime a new Salvation Army operation at Priory Farm, Boxted (which never really achieved much success in its six experimental years. More here: < <https://www.workhouses.org.uk/SA/> >

GENERAL BOOTH'S FARM COLONY
SCHEME AT HADLEIGH, IN ESSEX,
AND ITS BENEFACTOR,
MR. GEORGE HERRING.

3. THE VEGETABLE STOCKYARD AND THE BEETROOT GRANARY.



Presumably the rectangular block right of centre is a loaded wagon? The background may have been retouched out for clarity - a common practice. I think this barn must have been at the Park Farm end of the operation - but the jury is out on this, pending some proper evidence...

THE ILLUSTRATED LONDON NEWS.

DEC. 30. 1905 977

GENERAL BOOTH'S FARM COLONY
SCHEME AT HADLEIGH, IN ESSEX,
AND ITS BENEFACTOR,
MR. GEORGE HERRING.

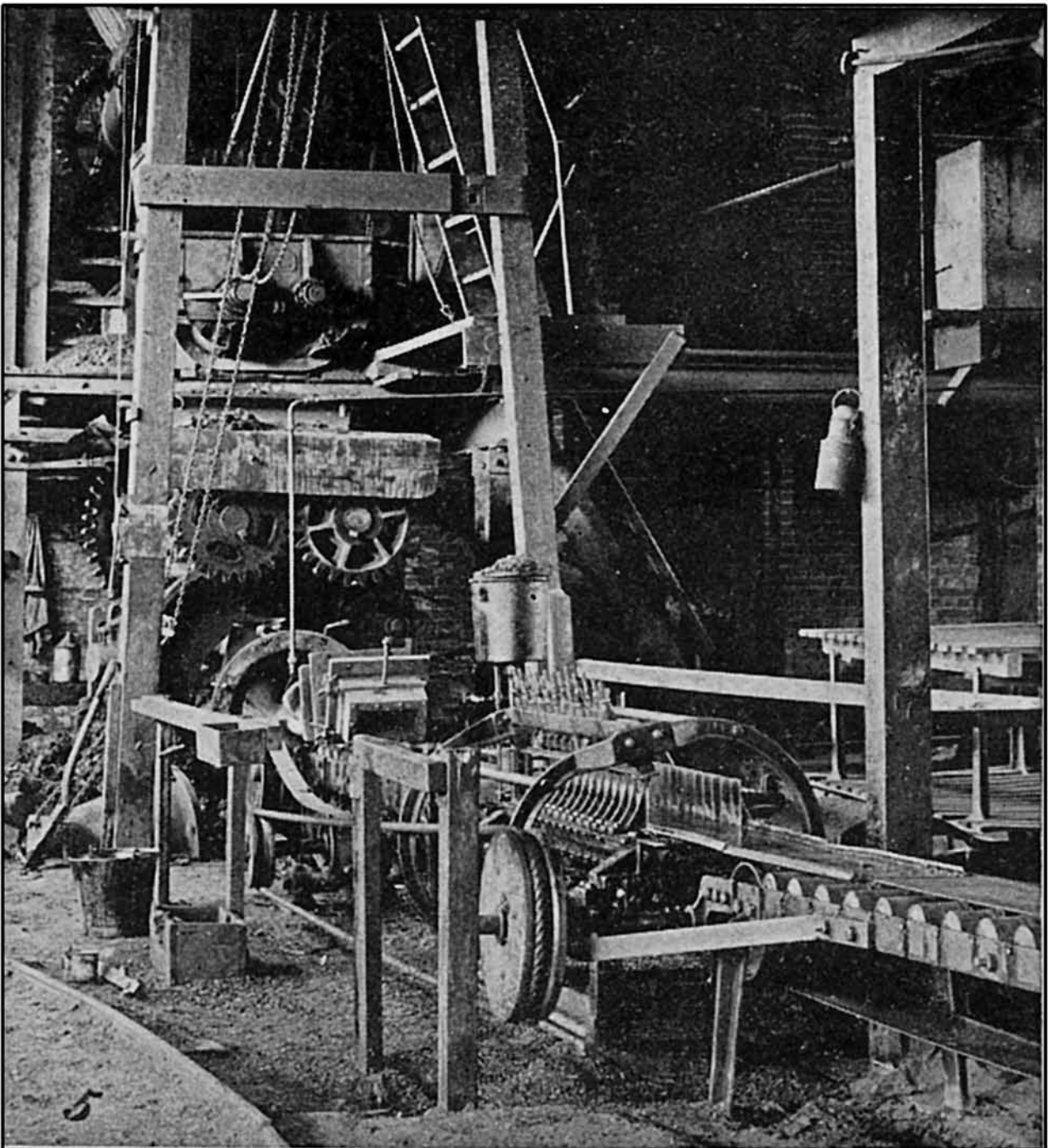
4. THE APPLE ORCHARD IN BLOSSOM.



Apple trees blossom from about mid April to mid May.

GENERAL BOOTH'S FARM COLONY
SCHEME AT HADLEIGH, IN ESSEX,
AND ITS BENEFACTOR,
MR. GEORGE HERRING.

5. THE GREAT BRICK-MAKING MACHINE.



This impressive picture is perhaps the best evidence I have seen to prove that the brick-making enterprise at Hadleigh was indeed a serious one, involving considerable investment.

GENERAL BOOTH'S FARM COLONY
SCHEME AT HADLEIGH, IN ESSEX,
AND ITS BENEFACTOR,
MR. GEORGE HERRING.

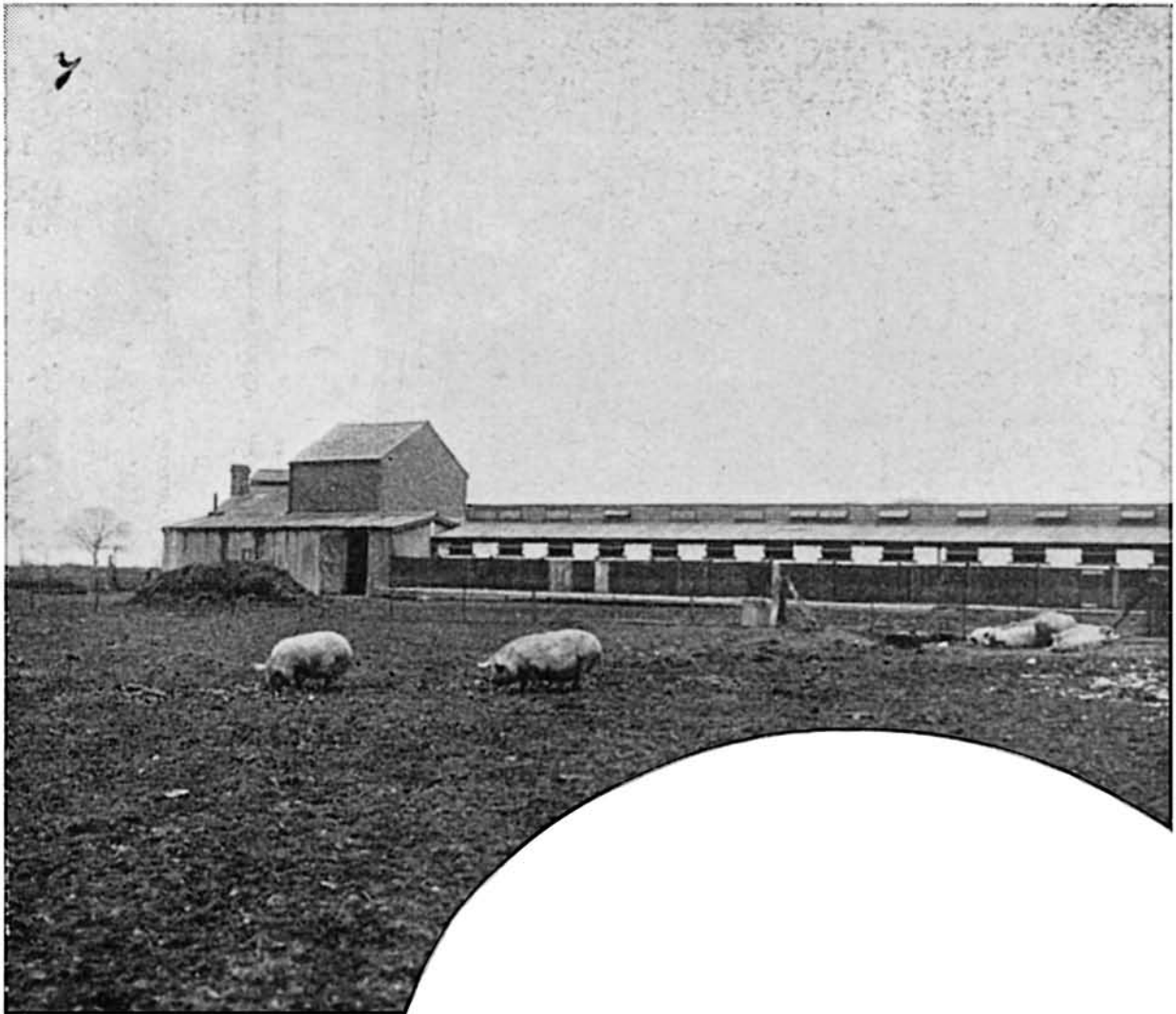
6. IN THE COLONY GROUNDS : HADLEIGH CASTLE ON THE RIGHT.



...no fence in 1905 and a bigger NE tower!

GENERAL BOOTH'S FARM COLONY
SCHEME AT HADLEIGH, IN ESSEX,
AND ITS BENEFACTOR,
MR. GEORGE HERRING.

7. THE MODERN PIGGERIES, WITH PRIZE PIGS.



GENERAL BOOTH'S FARM COLONY
SCHEME AT HADLEIGH, IN ESSEX,
AND ITS BENEFACTOR,
MR. GEORGE HERRING.

8. SHEPHERD WITH THIS YEAR'S LAMBS.



Could this be a burgeoning Elm Road in the distance and a couple of houses along Castle Lane? The shepherd looks like a young Fred Wanstell.

GENERAL BOOTH'S FARM COLONY
SCHEME AT HADLEIGH, IN ESSEX,
AND ITS BENEFACTOR,
MR. GEORGE HERRING.

9. THIS YEAR'S HAY CROP IN THE YARD.



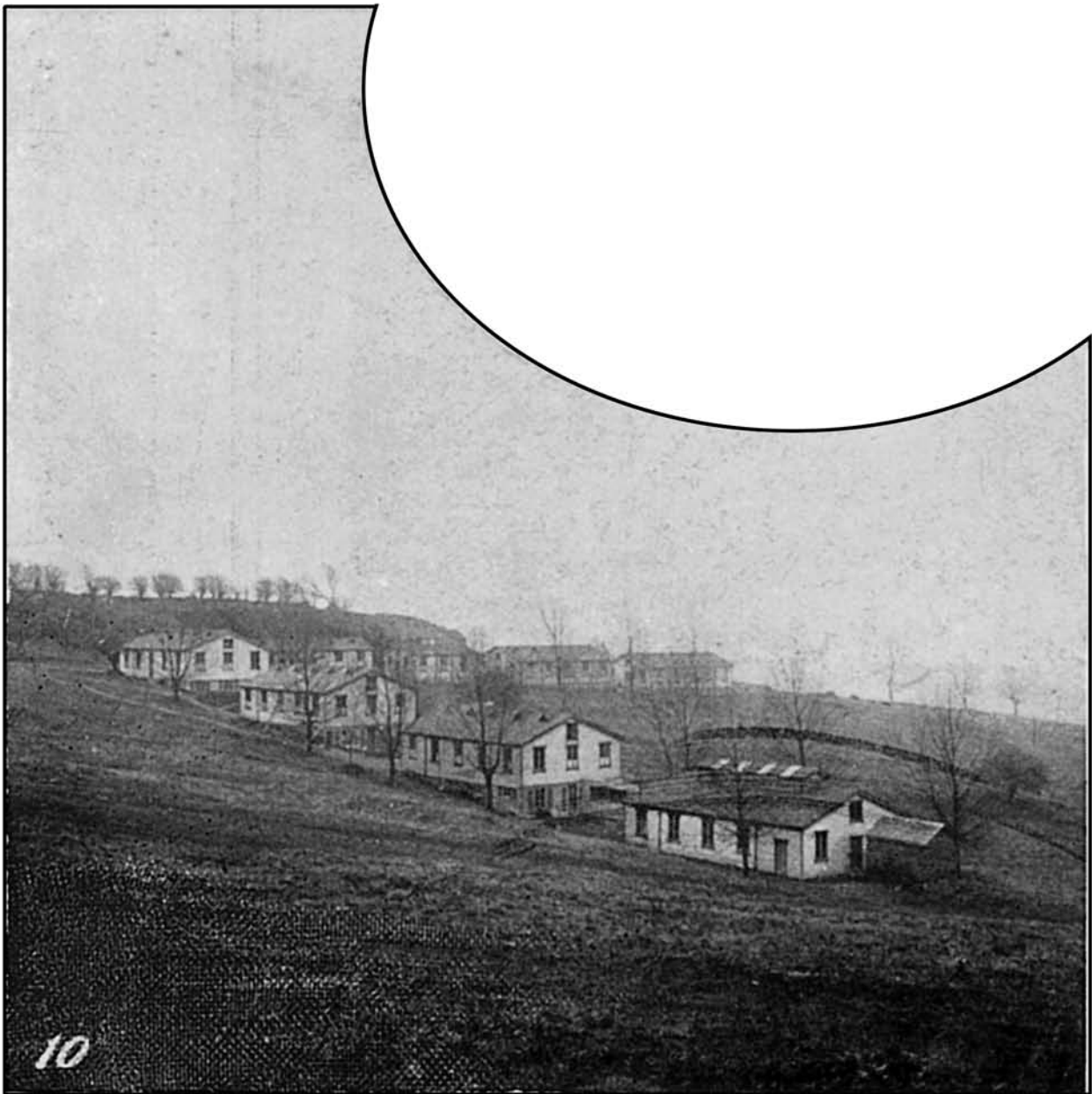
Can we identify the viewpoint here?

THE ILLUSTRATED LONDON NEWS.

DEC. 30. 1905 977

GENERAL BOOTH'S FARM COLONY
SCHEME AT HADLEIGH, IN ESSEX,
AND ITS BENEFACTOR,
MR. GEORGE HERRING.

10. THE DORMITORIES FOR COLONISTS.



A familiar view, but it's good to append a 1905 date to it.

GENERAL BOOTH'S FARM COLONY
SCHEME AT HADLEIGH, IN ESSEX,
AND ITS BENEFACTOR,
MR. GEORGE HERRING.

11. THE APPLE ORCHARD FROM CASTLE HILL.



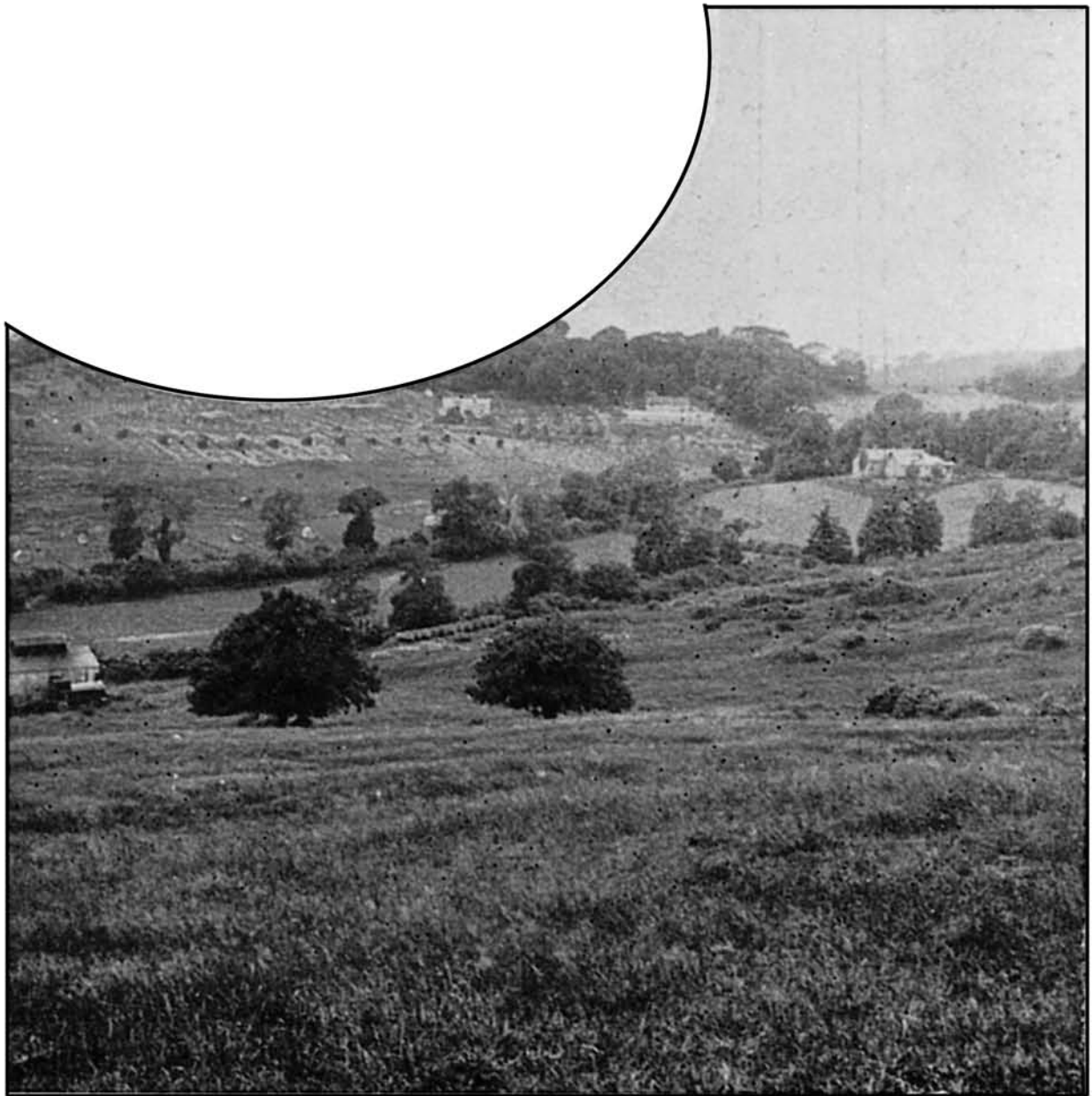
Looking north across the valley - and we are surprised to see quite a large pond! The rough pasture in the foreground is blighted with blackberry bushes - a perennial problem, it appears...

THE ILLUSTRATED LONDON NEWS.

DEC. 30. 1905 977

GENERAL BOOTH'S FARM COLONY
SCHEME AT HADLEIGH, IN ESSEX,
AND ITS BENEFACTOR,
MR. GEORGE HERRING.

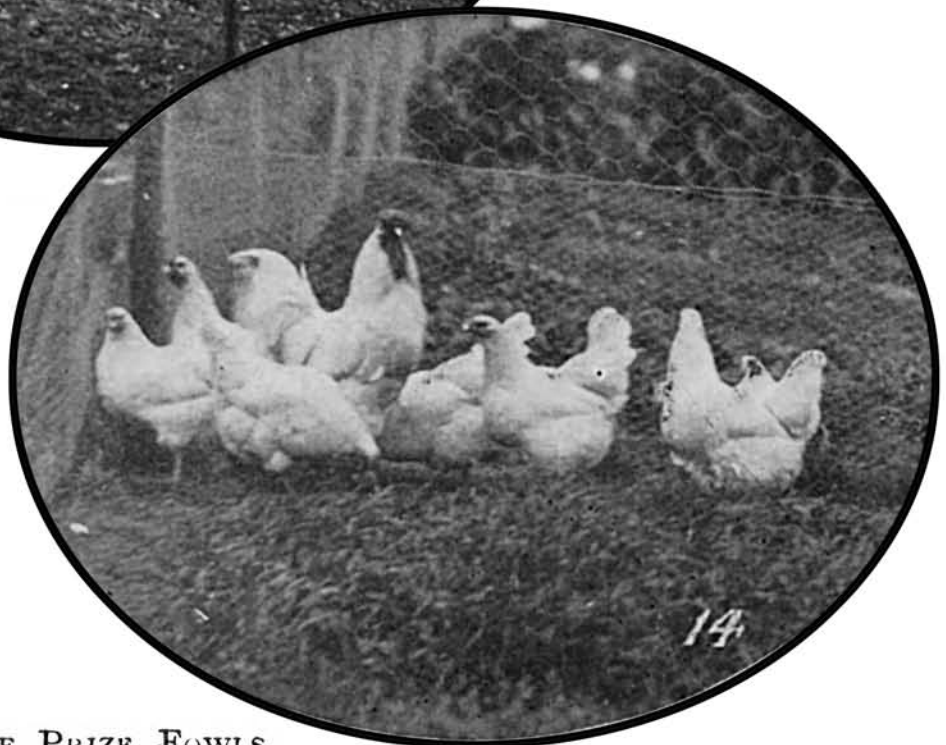
12. A GENERAL VIEW OF THE POULTRY-FARM,



Can anyone hazard a guess as to the viewpoint here?

GENERAL BOOTH'S FARM COLONY
SCHEME AT HADLEIGH, IN ESSEX,
AND ITS BENEFACTOR,
MR. GEORGE HERRING.

13. A FLOCK OF GEESE NEAR BRIGADIER ILIFFE'S HOUSE.



14. A GROUP OF PRIZE FOWLS.

What do we know about Brigadier Iliffe and his dwelling place (which one might presume is the house shown in the background of the top picture).