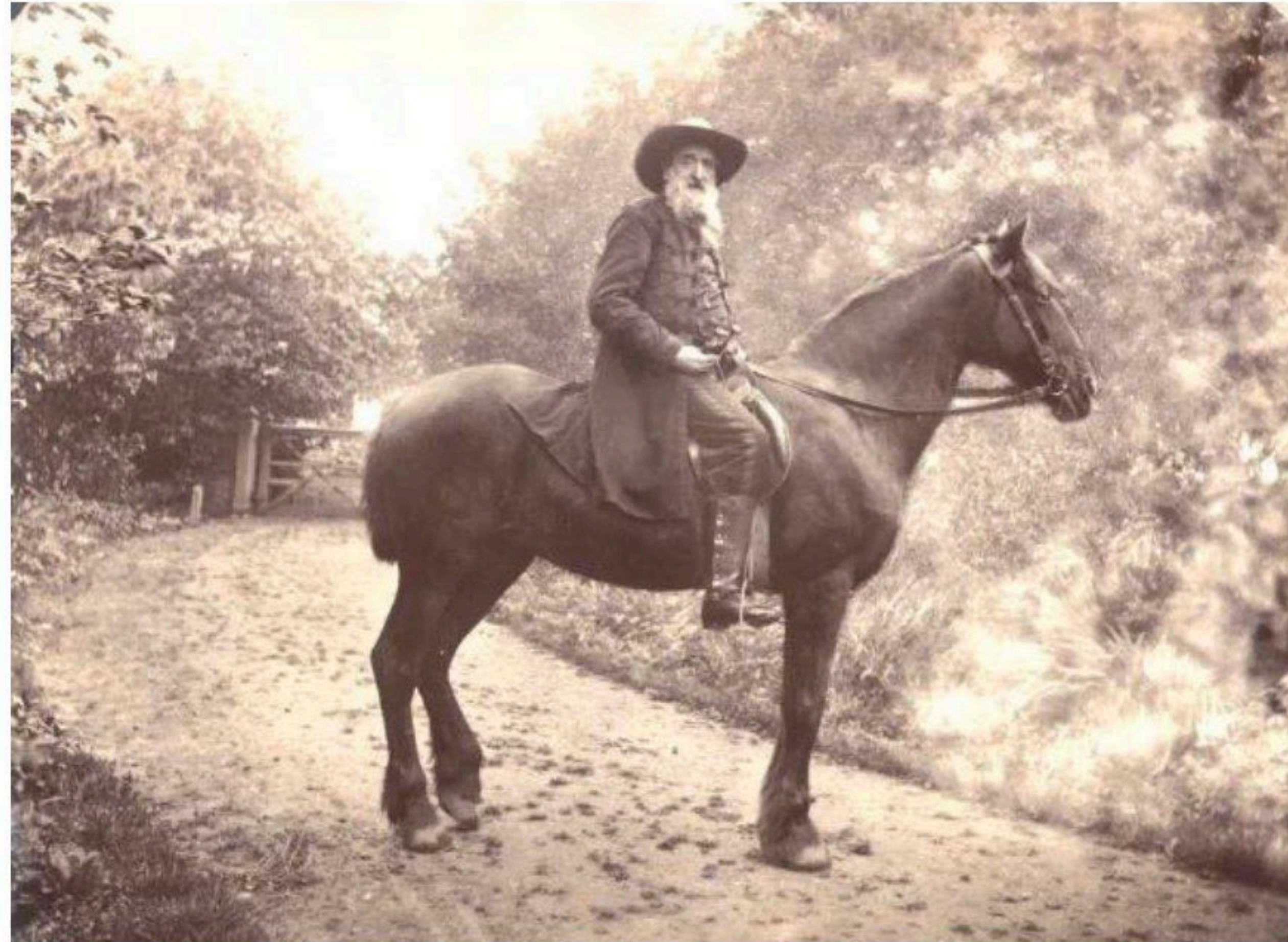


Heritage Open
Day
Sept 2023



This photo shows (General) William Booth on horseback as he would have travelled around the 900 acres of the original estate





Hadleigh Castle - heart of the park



There would originally have been many more buildings at Park Farm than just the farmhouse, as can be seen behind the large pond in this picture.



The trucks and tramway can be clearly seen in this photo of the clay pit.

In addition to the tramway, a light railway was constructed to carry the finished bricks and produce from the farm to the Salvation Army wharf on Hadleigh Ray.



This part of Hadleigh Farm Estate would have looked very different in the past – it was the site of one of the 3 brickworks established early in the history of the Colony. Known as 'Bricks III', bricks were produced here from around 1893 until 1939, when the area around Sayers Farm was requisitioned as a military camp.



The London 2012 Olympic Mountain bike events in action
Where the brick fields once were



Boys dining hall, originally



Next to the Tea Rooms, this building was originally the boys' dining room when Hadleigh Farm offered boys from age 12 the opportunity to be trained in farm work. It now forms a significant part of the training centre housing practical workshop areas, offices and reception.



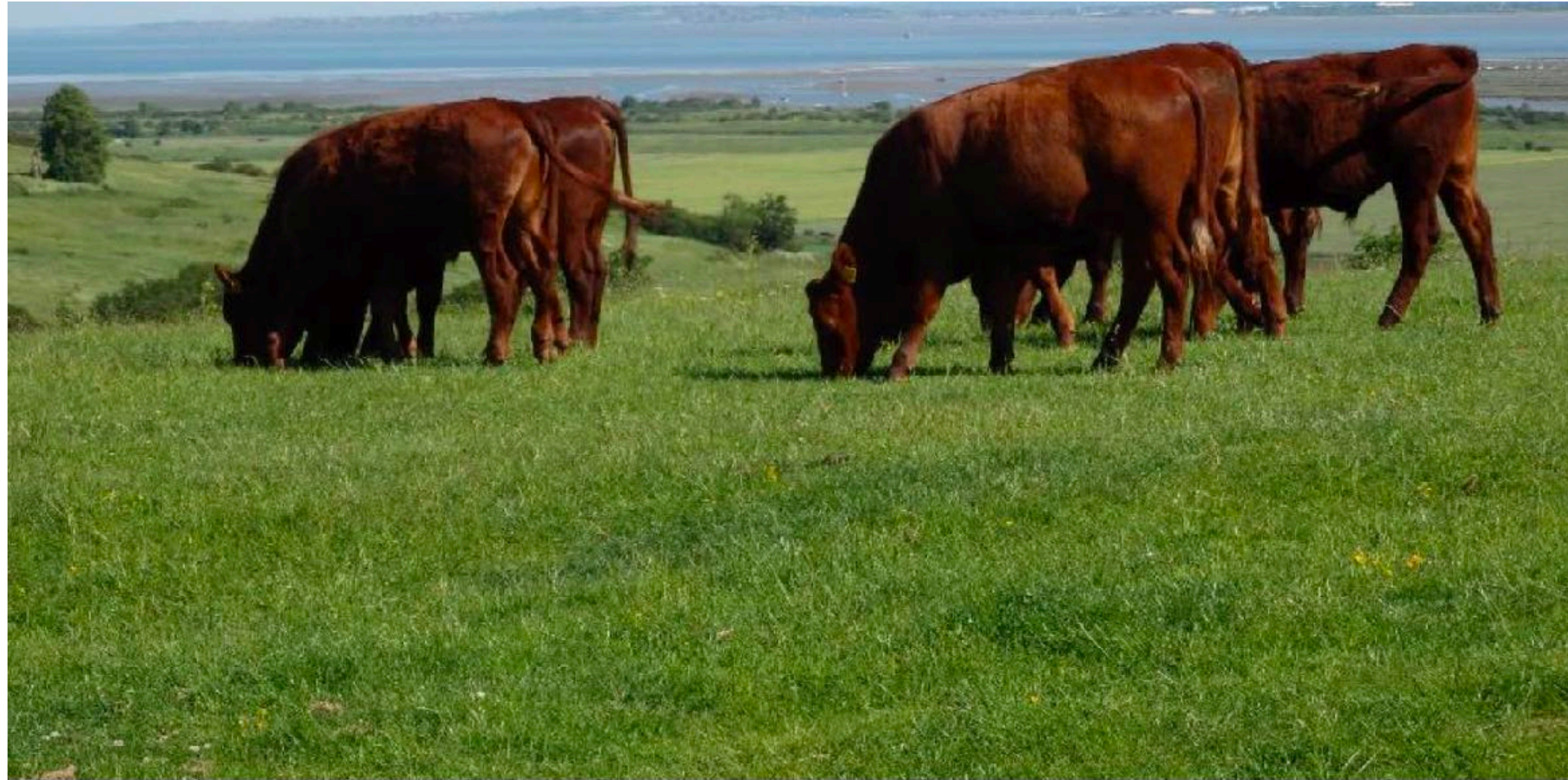
Harvest time and healthy work



Harvest time with machinery



The fashions, equipment and methods may have changed but Hadleigh Farm Estate is still home to a working farm.



You can still see cattle at Hadleigh Park, although today they are part of a grazing herd of Red Polls that help to maintain the grassland of the marshes and country park, rather than producing milk.

With a shepherd, reportedly



We hope that you have enjoyed this virtual tour and brief history of Hadleigh Farm Estate.

You are very welcome to visit Hadleigh Park in person to see the spectacular views, get active, enjoy 'a brew with a view' or simply breathe in the healing peace of our beautiful environment.

Follow our Facebook page @salarmyhfe
and see our website www.hadleighfarm.org.uk
for updates and events

For all enquiries regarding Hadleigh Farm Estate, please
email hfeadmin@salvationarmy.org.uk

Love looks beyond what people are to what they can become
1 Corinthians 13

The Salvation Army registered Charity No.214779 and in Scotland SC009359; Social Trust Registered Charity No. 215174 and in Scotland SC037691
Republic of Ireland Registered Charity No. CHY6399; Guernsey Registered Charity No. CH318; Jersey NPO0840; Isle of Man Registered Charity No. 267
The Salvation Army Trustee Company, registered number 00259322 (England and Wales). Registered office: 101 Newington Causeway, London SE1 6BN
General: Lyndon Buckingham Territorial Commander for the United Kingdom with the Republic of Ireland: Commissioner Anthony Cotterill