

Artist led, community focussed.

Hadleigh Art Trail

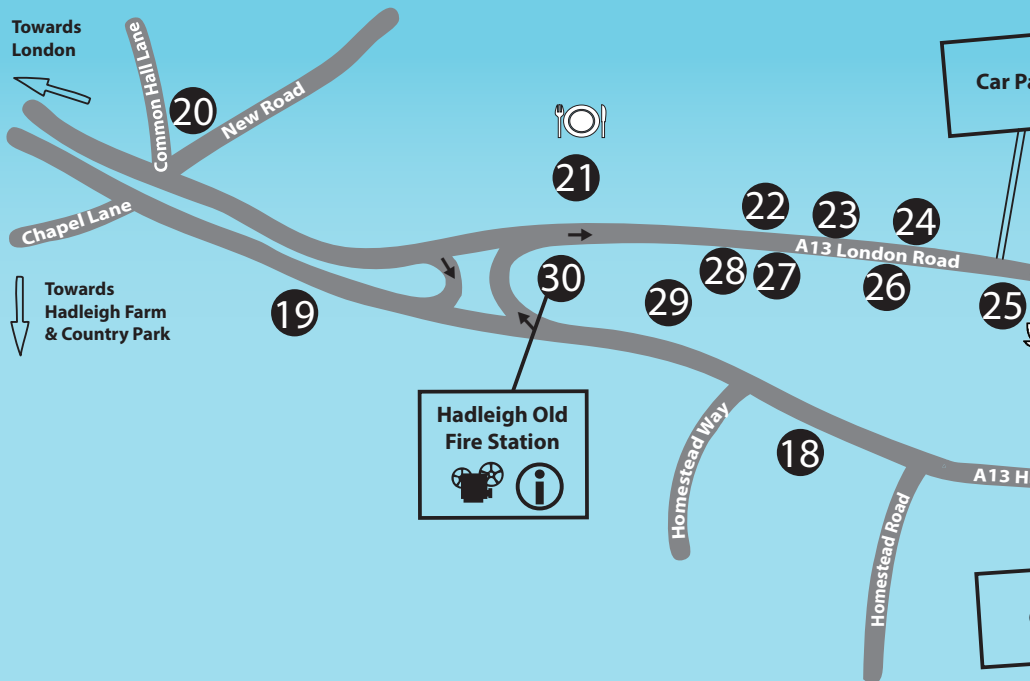
Friday 3 - Saturday 11 October 2014

Trail Guide
2014

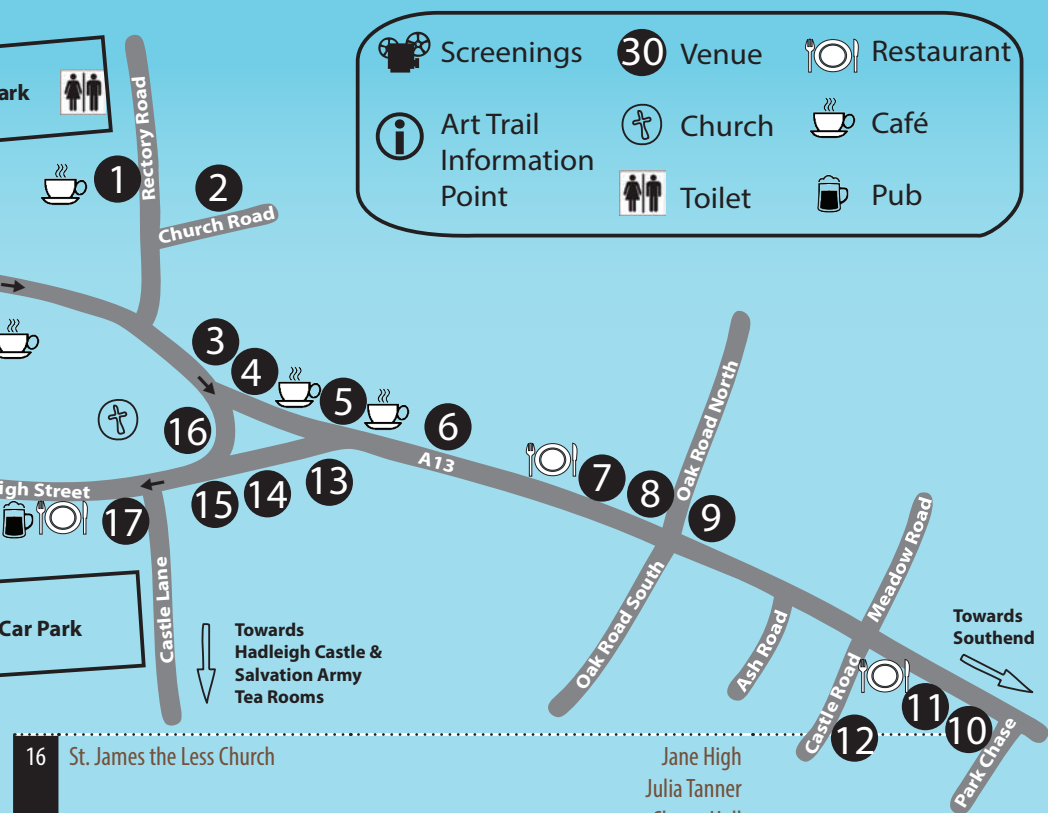


Proud to be part of





	Venue	Artist/Group	Opening information
1	Café Yemek	Claire Bartlett	
2	The Art Ministry	Exhibition & Open Sessions	
3	Barclays Bank	Nicola Upton & Mosaic Workshop Group	10am - 4pm Mon - Fri only
4	Angela's Kids Boutique	Bronwyn Oldham	
5	Hadleigh Podiatry	John Barr	
6	2nd Time Around Boutique	Paul Westgate	
7	Fenn Press & Print	Helen Rubinstein	
8	Amos Estate Agents	Anita Pickles	
9	Alpine Insurance	Dave Gilmore	
10	KAT Locksmiths	Sharon Stone	
11	1st Choice Properties	Dean Huntley	
12	Estuary Gallery Home Studio 33 Castle Road, SS7 2AU	Ian James Josephine James Westwood Art Group	10am - 5pm Closed Mon, Tues & Wed
13	Essex Beds	Steve Lodge	
14	Havens Hospices Charity Shop	Fair Havens Hospices Day Care Lizzie Ireland	
15	The Craft & Copy Shop	Alan Hockett	



16	St. James the Less Church	Jane High Julia Tanner Cherry Hall	
17	Paul Newman Interiors	Barry Andrews	
18	Castle Point Regeneration Shop	SEEVIC A2 Photography	Closed Saturday pm
19	Salvation Army Hadleigh Temple	Hadleigh Camera Club	
20	Stibbards & Sons	David Hurrell	External window display only
21	Morrisons	Hadleigh & Thundersley Community Archive	
22	Balloons at From Me To You	Open Arts	
23	Brown & Brand	Sharon King	
24	Salvation Army Charity Shop	Trevor Coates	
25	Munch Box	Hadleigh Camera Club	Closed Saturday pm
26	Bradleys Countrywide	Amy Mountney	
27	The Knitting Emporium	Adrian Lane	
28	Castle Locks	Elizabeth Ellis	
29	Hadleigh Library	The Essex100 image makers	
30	Hadleigh Old Fire Station	Cherry Sandover Peter Myers	Closed Wednesday
		All Trail Exhibition	Open Daily - see below

Events

Friday 3 October

The Art Ministry Venue ②

Open sessions - meet session participants and view their work, 10am - 12 noon

Saturday 4 October

The Art Ministry Venue ②

Exhibition of participants work, 11am - 3pm

Drop-in interactive group painting session *Castle Point - The Big Picture*, 11am - 3pm

Hadleigh Old Fire Station Venue ③①

Jane High *Animal Portraits Collage* drop-in workshop, 11am - 2pm

Glass Painting workshop with 2Create (HOFS House), 11am - 2pm

LIVE MUSIC from Southend Jazz Co-op, 2 - 3pm

Sunday 5 October

Estuary Gallery Home Studio Venue ①②

Photography workshop with Ian James. Bring your own camera, 11am

Watercolour demonstration with Josephine James, 2pm

Monday 6 October

The Art Ministry Venue ②

Open sessions - meet session participants and view their work, 11am - 1pm

Tuesday 7 October

The Art Ministry Venue ②

Open sessions - meet session participants and view their work, 11am - 1pm

FREE

A range of free drop-in workshops and demonstrations for all ages and abilities including collage, photography, water-colour painting, print-making, glass painting and origami.

No booking required.

See Event diary for details.

KINGSWAY COMMUNITY CINEMA

Hadleigh Old Fire Station (Venue 30) will be transformed into a temporary cinema. Three screenings showcasing local filmmakers, artist-made films and films celebrating the regional and international legacy of London 2012.

Booking essential. See flyer for details.

Full details visit www.ha

Wednesday 8 October

The Art Ministry Venue **2**

Open sessions - meet session participants and view their work, 2 - 4pm

Hadleigh Old Fire Station Venue **30**

Film screening evening (see website for full programme), doors open 6.30pm

Thursday 9 October

Hadleigh Old Fire Station Venue **30**

Meet the Artists - evening reception. Drinks, nibbles & art. All welcome, 6.30 - 9pm

Friday 10 October

The Art Ministry Venue **2**

Open sessions - meet session participants and view their work, 10am - 12 noon

Hadleigh Old Fire Station Venue **30**

Open Arts *Open Studio* (HOFs House) - meet artists & volunteers 1 - 4pm

Print-making workshop with Open Arts (HOFs House), 1 - 4pm (£2 incl tea/coffee)

Film screening evening (see website for full programme), doors open 6.30pm

Saturday 11 October

The Art Ministry Venue **2**

Exhibition of participants work, 11am - 3pm

Drop-in interactive group painting session *Castle Point - The Big Picture*, 11am - 3pm

Hadleigh Old Fire Station Venue **30**

Origami workshop for all the family, 10am - 12 noon

Open Studio - animal portrait artist Jane High (HOFs House), 11am - 5pm

LIVE MUSIC from Southend Jazz Co-op, 2 - 3pm

Film screening evening (see website for full programme), doors open 6.30pm

FREE TO ENTER PRIZE DRAW

Give us your feedback and be entered into a prize draw. Please see feedback collection points at selected venues.

ALL TRAIL EXHIBITION

Hadleigh Old Fire Station (Venue 30)

A selection of work from Trail artists will be on show daily throughout the Trail.

Open 10am - 5pm daily except -
Monday & Tuesday 1pm - 6pm
Fridays 10am - 3pm

hadleigharttrail.org.uk



HADLEIGH OLD FIRE STATION
ARTS · CULTURE · COMMUNITY



Welcome...

to Hadleigh Art Trail 2014

We are now in our fourth year with around 50 participating artists, photographers and community art groups and clubs based in Castle Point and beyond. Artists, photographers, sculptors and film makers showcase their work in 30 local shops, businesses and public buildings throughout the town. Many of the artworks are for sale directly from the artist.

The best way to get around the trail this October is to use our trail map - you will find all the artists listed by venue and our Event diary lists a range of FREE events and activities on offer.

Hadleigh Art Trail was established as part of the London 2012 legacy and is now independently run by local artists.

Proud to be part of Essex Summer of Art.

Enjoy your visit!

"So good for the community"

"Great to see art at the forefront in Hadleigh"

"Really interesting and dynamic event"

"All in all, really special. It works. Do more!"

2013 TRAIL VISITORS

Hadleigh Old

FIRE STATION

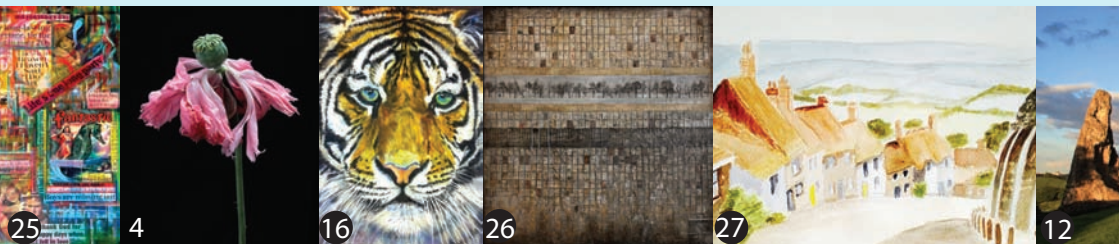
www.hofs.org.uk

Our partner venue hosts an All Trail Exhibition and our popular Pop-Up Café. HOFs artists: Hashim Akib, Marie Antoniou, Alan Hockett, David Hurrell, Emma Mower, Sharon Byrne, Chris Ruston, Sue Willis, Lisa Hawker, Ingrid Thorpe, Jane High, Steven King & Phil Bradshaw. Community groups: Hadleigh & Thundersley Community Archive, Essex Marching Corps, 2CREATE and Open Arts.

The Trail of artworks around the town runs from Friday 3 - Saturday 11 October, opening times vary. Some businesses do not open on Sundays and some may close early on Wednesday and Saturday.

DISCLAIMER The organisers of Hadleigh Art Trail cannot accept liability for loss, damage or injury sustained by any member of the public visiting Hadleigh Art Trail venues. The public do so at their own risk.

DETAILS ARE CORRECT AT TIME OF PUBLICATION BUT MAY BE SUBJECT TO CHANGE





The Rotary Club of Hadleigh Castle

Proud sponsors of the Hadleigh Art Trail Guide 2014



A warm welcome from the members of The Rotary Club of Hadleigh Castle. We are a group of friendly, sociable and charitable individuals wishing to help others while enjoying ourselves. We meet weekly at Rayleigh Weir Fire Station on Wednesday evenings from 7:30pm. Our members cover a wide age range and backgrounds. Our meetings are fun and friendly so if you enjoy socialising and would like to become involved in various fundraising activities, come along and learn more about what we do – you will be made very welcome. Last year we raised over £14,000, most of which has been distributed to local charities. There are more than 1.2 million members of Rotary worldwide. It is a service organisation whose motto is “Service Above Self”.

To join us contact either Ken Coombs on 01702 552787 or Sandra Allen on 01268 750527 or visit our website: <http://www.hadleighrotary.org>



NEXT FUNDRAISING EVENT:
Christmas Market,
Hadleigh Old Fire Station
Saturday 6 December 11am - 4pm

SCHOOL LIVE ART PROJECT

Children from Year 5 at Hadleigh Junior School will create a Wishing Tree mural in Solbys Lane, Hadleigh. Led by Hadleigh-based artists Jane High and Alan Hockett.

Leave a wish on our Wishing Tree web page
www.hadleigharttrail.org.uk/wishingtree

info@hadleigharttrail.org.uk



Pacitti Company presents

Friday 10 October 2014 from 6.30pm
Film Screening with special guests

On Landguard Point

PG
Some material may be offensive

Inspired by the histories and culture of the East of England, On Landguard Point exists at an intersection between live performance, community and cinema. The film stars hundreds of people from across the East of England. On Landguard Point is a non-narrative film built through poetry, patchwork, maps and slips of story. Woven together these forms accumulate ideas around what home means.

A film about home

Directed by ROBERT PACITTI

Original music by MICHAEL NYMAN

FREE Admission

Film still: On Landguard Point: Photo Company



www.pacitticompany.com/on-landguard-point



Essex County Council



Hadleigh Old Fire Station, High St. Hadleigh, Essex SS17 2PA
Part of the Kingsway Community Cinema project made possible with funding from Essex County Council Culture in Essex Small Grant Award

Saturday 11 October 2014 from 6.30pm
A community screening of an inspiring true story as told by Forest Whitaker

Rising from Ashes

Followed by a Q&A with representatives of RFA Foundation and Essex Legacy

'Rising from Ashes' is a feature length documentary about two worlds colliding when cycling legend Jack Boyer moves to Rwanda, Africa to help a group of struggling genocide survivors pursue their dream of a national team. As they set out against impossible odds both Jack and the team find new purpose as they rise from the ashes of their past. Created with a common goal, to tell a story of redemption, hope, and second chances. It was not about the bike, however, the bicycle became a tool that has changed a nation. (82 minutes)

The film follows Team Rwanda on its journey to Hadleigh, Essex to compete in the London 2012 Mountain Biking event held at Hadleigh Farm in August 2012.

FREE Admission (Voluntary donations - all proceeds to benefit RFA Foundation)



HADLEIGH OLD FIRE STATION
ARTS · CULTURE · COMMUNITY